



DEVIImat™ DTIR

The safe choice in underfloor heating

DEVI® 

About DEVI and Underfloor Heating

The Worlds Largest Underfloor Heating Manufacturer

Why choose DEVI underfloor heating?

Ever since the Romans invented Underfloor Heating, millions of people worldwide have benefited from luxurious warm floors. Underfloor Heating is a cost effective solution and adds the perfect finishing touch to your room.

A DEVI electrical floor heating system has lower installation costs compared with water or warm air heating systems, especially in smaller or energy efficient houses.

Comfort is not the only reason to choose DEVI

Pure comfort is far from the only reason to chose DEVI underfloor heating. DEVI offers minimal energy consumption, flexibility and durability. DEVI heating cables and heating mats come with a 10 year warranty. DEVI thermostats come with a two year warranty.



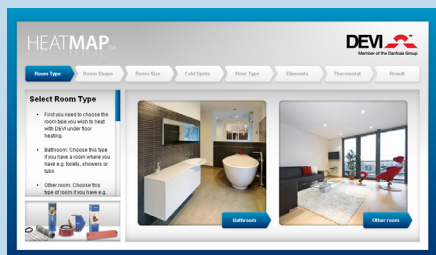
DEVI Underfloor Heating have been manufacturing heating systems for 65 years and are the worlds largest undefloor heating manufacturer.

DEVI Underfloor Heating is the Worlds leading manufacturer of intelligent electrical floor heating systems – a position secured by a dedicated focus on advanced and above all user friendly systems, developed in the world’s largest competence center for floor heating.

DEVI Underfloor Heating employs approx. 400 employees in our 3 modern quality, working environment certified factories in Vejle, Denmark, Saint Malo, France and Grodzisk, Poland (ISO 9001, ISO 14001 and OHSAS 18001).

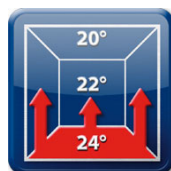
DEVI lives up to the expectations being a responsible world citizen. This is deeply rooted in our history and culture and it is reflected in the way we carry out our daily business.

Online Mat Planner



If you have access to the internet, you can use our online DEVI HeatMAP Planner - go to: www.devi.co.uk

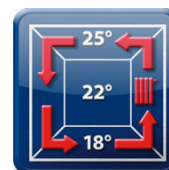
Heat rises



This simple fact explains why DEVI provides a more comfortable warmth than alternative radiator systems.

DEVI underfloor heating distributes the heat evenly over the whole floor providing an appropriately pleasant warmth for your feet, body and head. The wholesome heat surrounding your feet slowly rises, warming your body without ever becoming oppressive. Typically, underfloor heating makes it possible to lower the average room temperature by 2° C without affecting the degree of comfort.

This means that temperature can be reduced by around 20% - which is both an economic and an environmental advantage.

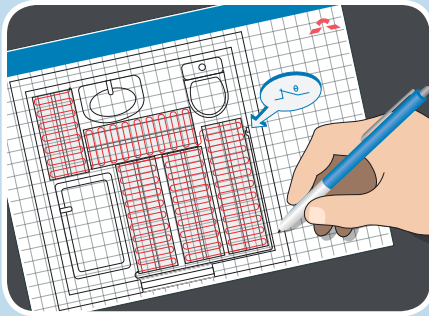


Radiator Systems

A radiator system throws heat up at head height which then travels further up to the ceiling, where it remains until it becomes cold. Then it falls down and results in a cold draft around your feet.

DEVI[™] DTIR - Installation

Easy installation with a DEVI[™] mat system

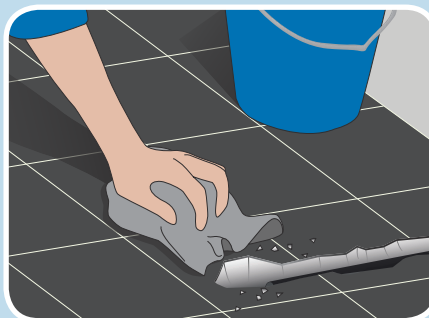


Draw a sketch of the installation that shows the element layout, cold leads and connections, junction box, sensor and thermostat. Keep the sketch for future reference, as knowing the exact locations of these components makes troubleshooting and repair easier if ever needed. Once the heating system has been laid take a photo for future reference.

You can see a DEVI[™] mat installation video on www.YouTube.com - Search for DEVI[™] mat and pick the 'Step-by-Step' video.



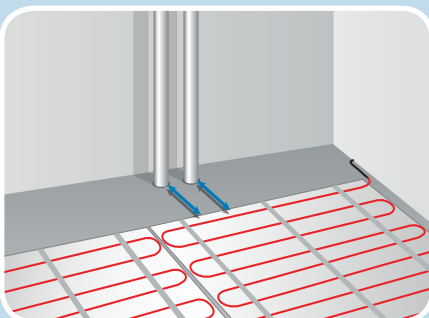
Cut a groove into the floor and wall 10mm deep and 10mm wide for the floor sensor and tube. The tube allows for easy removal of the floor sensor if required.



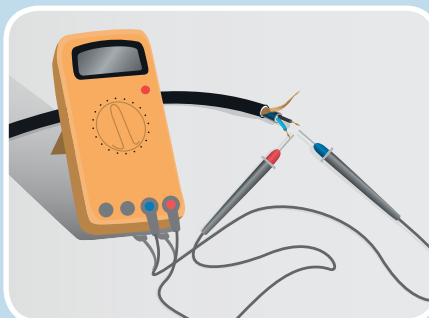
Ensure the subfloor is level, secure, smooth, dry and clean.



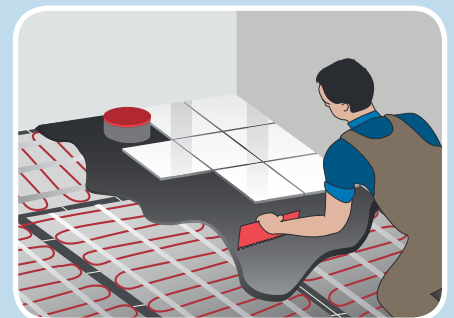
Start laying the mat. When you reach the end of the mat run simply cut the mesh and turn the mat. The red cable must NOT be cut.



The element needs to be a min of 30mm away from conductive parts e.g. water pipes.



Regularly measure ohmic resistance and insulation resistance during installation.



Cover with one layer of self levelling compound if needed, and allow to dry before tiling.

DEVIreg 550 - Thermostat

DEVIreg 550 - Flush mounted 7-day programmable thermostat.

Optimum start function. The thermostat is supplied with a floor sensor for control of the desired floor temperature. It comes preset with the most common user settings, simple to use "install + go" programmable thermostat. Temperature range 5-35°C. Available in brushed silver and white.



DEVIreg 535 - Thermostat

Flush mounted programmable thermostat. The thermostat is

supplied with a floor sensor for control of the desired floor temperature. Temperature range 5-35°C. Tamper proof safety function.



DEVIreg 130 - Thermostat

Basic surface mounted thermostat, suited to floor warming applications.

Uses a floor sensor to monitor the floor temperature, but does not feature a timer.



DEVI[™] DTIR

Product Selection and Technical Information

Why DEVI[™] DTIR

- Ultra sticky mat making it the easiest to install.
- Easy to roll out and quick to install
- High grade lead free PVC
- Under 4 mm thin
- Part L compliant
- 17th Edition Compliant
- SEMKO approved
- Market Leading 10 Year Floor Guard Warranty

Typical Application Areas:

- Indoor floor heating in domestic and public buildings
- Kitchens, bathrooms, living areas, hallways and conservatories

DEVI recommends the usage of suitable insulation underneath our heating systems to ensure optimum performance, reducing downward heatloss and increasing heat up time.

* For high heat loss areas we recommend the DEVI[™] DTIF 200W/m²

DEVI FLOOR GUARD Decade Warranty:

DEVI not only guarantees it's heating systems but also guarantees the floor in the unlikely event that the system cannot be repaired due to a manufacturing fault. Other manufacturers only offer product warranties which do not include the replacement of the flooring.



DEVI [™] DTIR 100W/m ² - for timber based floor			
Code No	Area (m ²)	Load (W)	Ω
83030500	0.5	50	1058
83030502	1.0	100	529
83030504	1.5	150	352
83030506	2.0	200	264
83030508	2.5	250	211
83030510	3.0	300	176
83030512	3.5	350	151
83030514	4.0	400	132
83030516	5.0	500	105
83030518	6.0	600	88.1
83030520	7.0	700	75.5
83030522	8.0	800	66.1
83030524	9.0	900	58.7
83030526	10.0	1000	52.4
83030528	12.0	1200	44.1

DEVI [™] DTIR 150W/m ² - for concrete based floor			
Code No	Area (m ²)	Load (W)	Ω
83030560	0.5	75	705
83030562	1.0	150	352
83030564	1.5	225	235
83030566	2.0	300	176
83030568	2.5	375	141
83030570	3.0	450	117
83030572	3.5	525	100
83030574	4.0	600	88.1
83030576	5.0	750	70.5
83030578	6.0	900	58.7
83030580	7.0	1050	50.3
83030582	8.0	1200	44.0
83030584	9.0	1350	39.1
83030586	10.0	1500	35.2
83030588	12.0	1800	29.3

DEVI [™] reg Thermostats	
Code No	Description
140F1060 (White)	DEVI [™] reg 550 thermostat/timer with intelligence
140F1063 (Brushed Silver)	DEVI [™] reg 550 thermostat/timer with intelligence
140F1010 (White)	DEVI [™] reg 130 thermostat (no timer)
140F1050 (White)	DEVI [™] reg 535 thermostat/timer
30953095	DEVI [™] guard cable monitor
18055510	DEVI [™] mat repair kit
19809103	Flexpipe for floor sensor
140F1091	Floor sensor - NTC sensor, 15 kOhm at 25°C, cable length 3 metre

DEVI [™] DTIR Cable Specifications	
Cable Construction	Twin Conductor
Diameter	under 4 mm
Pulling Strength	120N
Deformation Strength	600N
Volt	230V
Conductor Insulation	FEP
Outer Sheath	High grade lead-free PVC
Screen	ALU foil + 0.5mm bi conductor

Max load on 1 thermostat	DEVI [™] reg wired to 13A fused spur	DEVI [™] reg wired to 16A MCB in consumer unit
Mat - 100W / m ²	30m ²	35m ²
Mat - 150W / m ²	20m ²	23m ²
Mat - 200W / m ²	15m ²	17m ²

It is possible to heat a larger area, if a suitable sized supply contactor is fitted.
All DEVI Underfloor heating systems must be RCD protected.

